

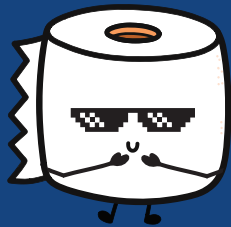
DUNNY DO'S



Pee



Poo



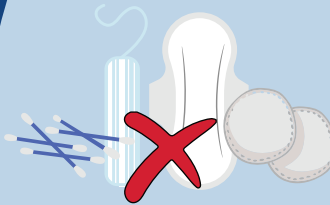
Toilet paper



DUNNY DON'TS



Flushable wet wipes

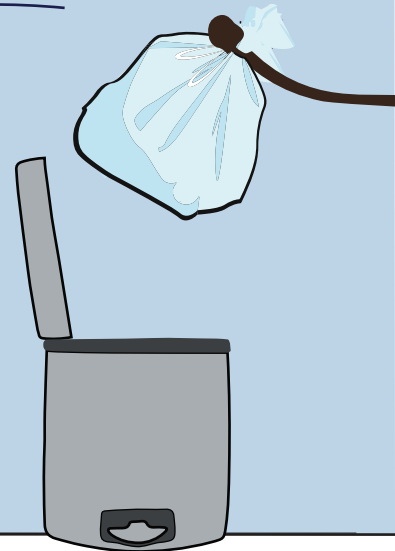


Sanitary products



Tissues

Flushing these items can block pipes, causing sewage overflows and expensive plumbing bills. Wet wipes, tissues, and sanitary products should be bagged and binned.



For more tips go to lovewater.centralcoast.nsw.gov.au



Water and Sewer